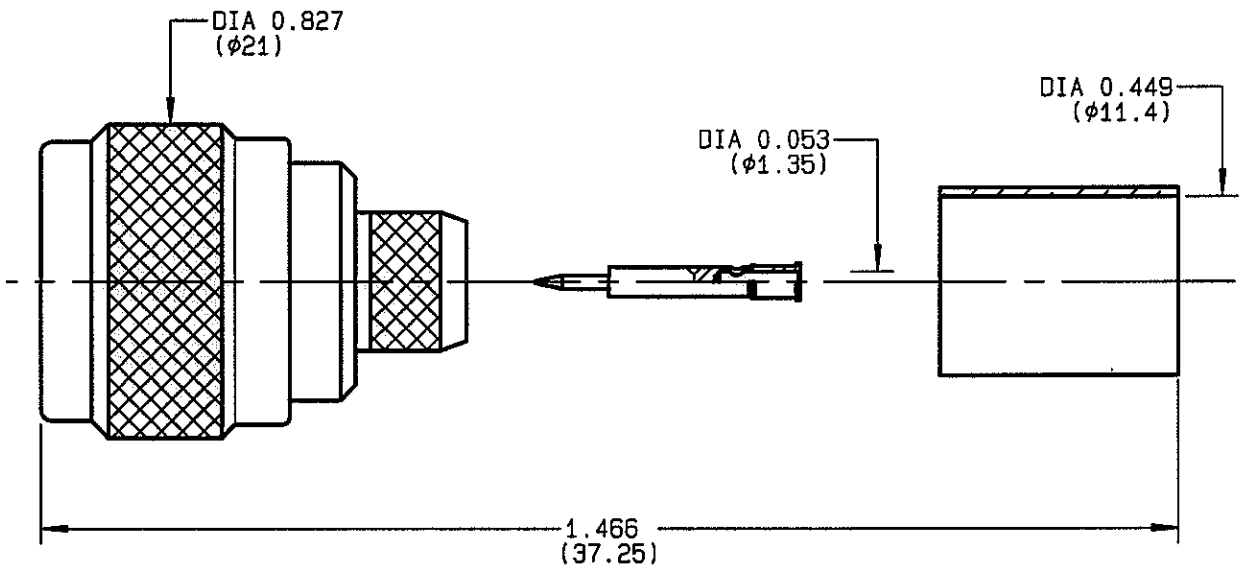


**STRAIGHT PLUG FULL CRIMP-TYPE  
CABLE 11/75 D**

**R162.088.000**  
**SERIES N 75**



NOMINAL IMPEDANCE	<b>75</b> Ω
FREQUENCY RANGE	<b>0-1.5</b> GHz
TEMPERATURE RATING	<b>-55/+155</b> °C
V.S.W.R	<b>1.06</b> + x F(GHz)Maxi
RF INSERTION LOSS	<b>0.15</b> √F(GHz) dB Maxi
VOLTAGE RATING	<b>1400</b> Veff Maxi
DIELECTRIC WITHSTANDING VOLTAGE	<b>2500</b> Veff Mini
INSULATION RESISTANCE	<b>5000</b> MΩMini
HERMETIC SEAL	<b>NA</b> Atm.cm <sup>3</sup> /s
LEAKAGE (pressurized only)	<b>NA</b>
MECHANICAL DURABILITY	<b>500</b> Cycles
WEIGHT	<b>31</b> gr
SPECIFICATION	

CABLES :	<b>RG 216</b>
OTHERS CHARACTERISTICS	
CABLE RETENTION	<b>300</b> N Mini
CENTER CONTACT RETENTION	
Axial force - mating end	<b>27</b> N Mini
Axial force - opposite end	<b>27</b> N Mini
Torque	<b>NA</b> cm.N Mini
RECOMMENDED TORQUES	
Mating	<b>130</b> cm.N
Panel nut	<b>NA</b> cm.N
Clamp nut	<b>NA</b> cm.N

CONNECTOR PARTS	MATERIALS	FINISH	(all values are given in micrometers)
BODY	BRASS	BBR 2	
OUTER CONTACT	BRASS	BBR 2	
CENTER CONTACT	BRASS	GOLD 0.5 OVER NICKEL 2	
INSULATOR	PTFE	-	
GASKET	SILICONE RUBBER	-	
OTHERS PIECES	BRASS	BBR 2	

GAUTIER

ISSUE	CREATION DATE	FILE PART-NUMBER
<b>9808D01</b>	<b>20-OCT-94</b>	<b>EPC 96-07</b>



The information given here is subject to change without notice. Design changes may be in order to improve the product.

*Connect to the future*

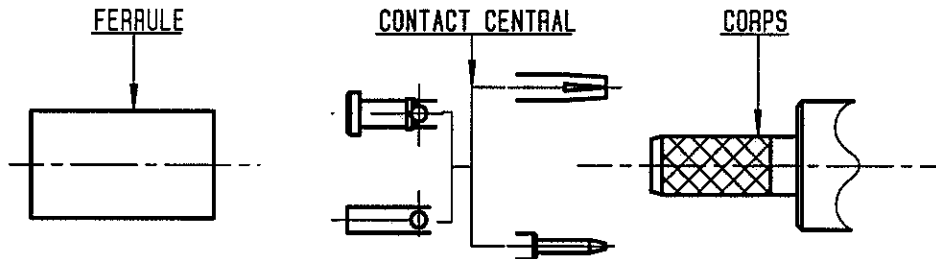


**RADIALL®**

**R162.088.000**

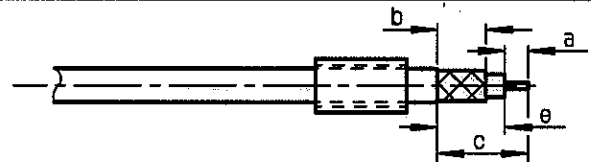
EDITION 9808D01

SERIE N 75



①

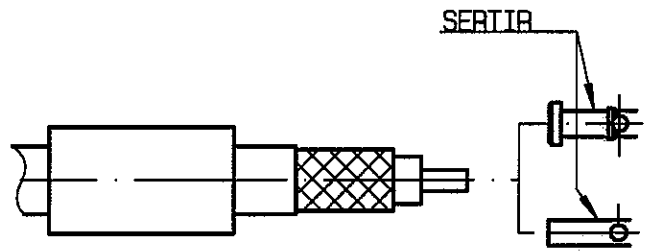
Glisser sur le cable la ferrule  
Denuder le cable .



Denudage	a	b	c	d	e
mm	4.5	7.5	17		12.5

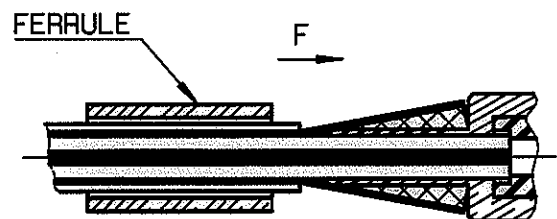
②

Monter le contact central en butee  
sur le dielectrique du cable .  
Sertir le c.central .  
Pince R 282 223 000 ( Hex. : 1.73 ) ou  
Pince R282 293 000 ( M22520/5-01 )  
+ machoires R282 235 011 ( M22520/5-11 )



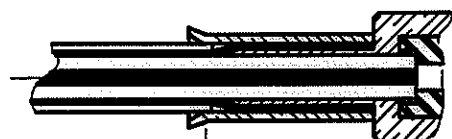
③

Epanouir la tresse .  
Monter le cable dans le corps en  
en butee sur l'isolant .  
Glisser la ferrule sur la tresse .  
(Suivant F)



④

Sertir la ferrule avec la pince  
R 282 231 000 ( Hex. : 10.54) ou  
Pince R282 293 000 ( M22520/5-01 )  
+ machoires R282 235 116 ( Y 116 DANIELS )  
Enlever le surplus de tresse .



Zone de sertissage

GAUTIER